



- 0 **Transgenerational effects of three global change drivers** 53
on an endemic Mediterranean plant 55
- 5 **Beatriz Pías, Silvia Matesanz, Amaya Herrero, Teresa E. Gimeno, Adrián Escudero and**
Fernando Valladares 60
- 10 *B. Pías (beapias@ccma.csic.es), S. Matesanz, A. Herrero, T. E. Gimeno and F. Valladares, Laboratorio Internacional de Cambio Global*
(LINC-Global), Inst. de Recursos Naturales, CCMA-CSIC, c/ Serrano 115. dpdo, ES–28006, Madrid, Spain. SM also at: Biology Dept,
Wesleyan Univ., Middletown, CT 06459, USA.–A. Escudero and FV, Depto de Biología y Geología, Univ. Rey Juan Carlos, c/ Tulipán s/n,
ES–28933 Móstoles, Spain. 65
- 15 Plant populations are subjected to changes in their natural environment as a result of the incidence of simultaneous global
change drivers. Despite the fact that these changes can largely affect early fitness components, information on the effects of
simultaneous drivers of global change on offspring traits and performance is particularly scant. We analyzed the combined
effect of three global change drivers of critical importance in Mediterranean ecosystems (habitat fragmentation, reductions
in habitat quality and water availability) on germination and seedling performance of the gypsophile shrub *Centaurea*
20 *hyssopifolia*. Seedlings from 39 mother plants from eight different environments (resulting from the combination of the
three global change drivers) were sown and grown in a common garden. First, germination percentage, seedling size and
seedling survival were monitored. Secondly, seedling performance and ecophysiological traits were measured under well
and low-watered conditions. Fragmentation showed the largest negative effect on germination and offspring performance.
Seedlings of mothers from small fragments germinated more slowly, showed lower survival, died faster, and showed
25 lower photosynthetic rates under well-watered conditions compared to seedlings of mother plants from large populations.
Seedlings of different maternal origins did not differ in their response to water stress or in their ability to survive to drought.
Ninety-five percent of the seedlings survived until soil water content was as low as 3%. Our study shows that global change
can have not only immediate impacts on plant populations but also transgenerational effects, and highlights the impor-
tance of studies involving multiple drivers and a more integral understanding of global change. 80
- 30 In the last decades an increasing number of studies have reported rapid human-mediated changes in the environment
and their impact on plant populations and communities (Chapin et al. 2001, Peñuelas and Filella 2001, Parmesan
and Yohe 2003). Plant populations can respond to these environmental changes via plastic responses in phenotype,
35 but long-term responses that are only observable after one or more generations may also occur. These transgenerational
responses can result either from maternal environmental effects or from evolutionary responses to novel selection
pressures, and are important because they may alter the ultimate ecological impact of the environmental change.
Mediterranean-type ecosystems and particularly semi-
arid gypsum habitats are very vulnerable to global change
40 (Lavorel et al. 1998, Mooney et al. 2001). In these habi-
tats, several global change drivers can occur simultaneously,
such as increased aridity (i.e. number and length of dry peri-
ods; Christensen et al. 2007) reductions in habitat quality
and habitat fragmentation (Lavorel et al. 1998, Sala et al.
50 2000). Reductions in water availability (due to increased
aridity) and habitat quality may hinder germination, seed-
ling establishment, growth and seedling survival, thereby
52 affecting the most critical life stages of plant cycle in these
water-limited communities (Harrington 1991, Eliason and
Allen 1997). Habitat fragmentation, caused by agriculture
and land exploitation, transforms the landscape into patches
of natural vegetation interspersed in agriculture fields
(Kosmas et al. 2002, Foley et al. 2005), and leads to the
loss of genetic variability and the increase of inbreeding
(reviewed by Lienert 2004). 85
Overall, different global change drivers interacting simul-
taneously create new scenarios under which the capacity of
species to respond is poorly unknown, primarily because
interactions among drivers may generate non-additive effects
that cannot be easily predicted based on single-factor studies
90 (Sala et al. 2000, Shaver et al. 2000, Alonso and Valladares
2008, Matesanz et al. 2009). Despite several studies address
the effects of global change drivers on the reproductive
output of plant species (Ågren 1996, Aguilar et al. 2006,
Brys et al. 2004), information of their effects on offspring
100 performance is far more scant (Kéry et al. 2000, Kolb 2005,
Yates et al. 2007), and is virtually inexistent for several
drivers considered simultaneously (Lau et al. 2008).
Maternal environmental effects occur when the envi-
ronmental conditions experienced by parents influence
105 offspring traits and refer to the capacity of the maternal

0 environment to induce changes in gene expression, interact with the genotype and directly influence seed provision (Roach and Wulff 1987, Lacey 1996, 1998, Molinier et al. 2006). These maternal effects have been considered especially relevant during the early developmental life stages, such as germination and seedling survival (Gutterman 1993, Weiner et al. 1997, Galloway 2001, Luzuriaga et al. 2006) although they may persist in adult life stages and even affect plant reproductive success (Wulff et al. 1994, Galloway 2001). Recent studies have revealed that plant species are able to express transgenerational phenotypic plasticity as an inherited maternal environmental effect (Donohue and Schmitt 1998, Donohue 1999, Galloway 2001, Etterson and Galloway 2002, Sultan et al. 2009). In this sense, maternal effects can result in reduced or increased plasticity to the offspring environmental conditions (Bezemer et al. 1998, Huxman et al. 2001). When maternal and offspring environments are correlated, transgenerational phenotypic plasticity may be adaptive, improving plant fitness (Mosseau and Fox 1998, Van Zandt and Mopper 2004, Galloway 2005, Molinier et al. 2006, Galloway and Etterson 2007, Sultan et al. 2009).

The main aim of this study was to compare the performance of the offspring of mothers from eight different environments (resulting from the combination of the three global change drivers: habitat fragmentation, changes in habitat quality and water availability) of the endemic gypsophile *Centaurea hyssopifolia* (Asteraceae). In a previous field study, mother plants were selected in natural habitats that differed in the level of habitat fragmentation (large and small fragments) and habitat quality (high and poor), and were submitted to experimental manipulation of water availability for two years (Matesanz et al. 2009). In this study, Matesanz et al. (2009) found complex and non-additive effects of these three drivers on plant survival, phenology and reproductive effort; so transgenerational effects of global change are expected in this species. We performed a common garden experiment using the offspring of these mother plants to test the following hypothesis: 1) germination, seedling survival and growth are lower in seedlings from mother plants from the most unfavourable environments and 2) the maternal environment influences seedling's physiological plasticity to water stress and their ability to survive to drought.

45 Methods

Study species

Centaurea hyssopifolia is a perennial shrub, endemic to gypsum outcrops of semiarid central Spain (Luzuriaga et al. 2006). It constitutes one of the dominant species of the dwarf shrub plant communities of the Iberian gypsum habitats, which are considered among the most threatened habitats in the Mediterranean Basin. Human activities have strongly fragmented gypsum shrub communities, including *C. hyssopifolia* populations. Flowering plants produce 2–550 capitula with an average of 2.75 (range 0–11) viable seeds per capitulum (Matesanz unpubl.). Flowering period extends from mid May to mid July and seeds ripen from early June to later July. It is a self-incompatible species with generalist entomophilous pollination (Luzuriaga et al. 2006).

Seed origin and experimental design

61
65
70
75
80
85
90
95
100
105
110
115
120
125
130
135
140
145
150
155
160
165
170
175
180
185
190
195
200
205
210
215
220
225
230
235
240
245
250
255
260
265
270
275
280
285
290
295
300
305
310
315
320
325
330
335
340
345
350
355
360
365
370
375
380
385
390
395
400
405
410
415
420
425
430
435
440
445
450
455
460
465
470
475
480
485
490
495
500
505
510
515
520
525
530
535
540
545
550
555
560
565
570
575
580
585
590
595
600
605
610
615
620
625
630
635
640
645
650
655
660
665
670
675
680
685
690
695
700
705
710
715
720
725
730
735
740
745
750
755
760
765
770
775
780
785
790
795
800
805
810
815
820
825
830
835
840
845
850
855
860
865
870
875
880
885
890
895
900
905
910
915
920
925
930
935
940
945
950
955
960
965
970
975
980
985
990
995
1000
1005
1010
1015
1020
1025
1030
1035
1040
1045
1050
1055
1060
1065
1070
1075
1080
1085
1090
1095
1100
1105
1110
1115
1120
1125
1130
1135
1140
1145
1150
1155
1160
1165
1170
1175
1180
1185
1190
1195
1200
1205
1210
1215
1220
1225
1230
1235
1240
1245
1250
1255
1260
1265
1270
1275
1280
1285
1290
1295
1300
1305
1310
1315
1320
1325
1330
1335
1340
1345
1350
1355
1360
1365
1370
1375
1380
1385
1390
1395
1400
1405
1410
1415
1420
1425
1430
1435
1440
1445
1450
1455
1460
1465
1470
1475
1480
1485
1490
1495
1500
1505
1510
1515
1520
1525
1530
1535
1540
1545
1550
1555
1560
1565
1570
1575
1580
1585
1590
1595
1600
1605
1610
1615
1620
1625
1630
1635
1640
1645
1650
1655
1660
1665
1670
1675
1680
1685
1690
1695
1700
1705
1710
1715
1720
1725
1730
1735
1740
1745
1750
1755
1760
1765
1770
1775
1780
1785
1790
1795
1800
1805
1810
1815
1820
1825
1830
1835
1840
1845
1850
1855
1860
1865
1870
1875
1880
1885
1890
1895
1900
1905
1910
1915
1920
1925
1930
1935
1940
1945
1950
1955
1960
1965
1970
1975
1980
1985
1990
1995
2000
2005
2010
2015
2020
2025
2030
2035
2040
2045
2050
2055
2060
2065
2070
2075
2080
2085
2090
2095
2100
2105
2110
2115
2120
2125
2130
2135
2140
2145
2150
2155
2160
2165
2170
2175
2180
2185
2190
2195
2200
2205
2210
2215
2220
2225
2230
2235
2240
2245
2250
2255
2260
2265
2270
2275
2280
2285
2290
2295
2300
2305
2310
2315
2320
2325
2330
2335
2340
2345
2350
2355
2360
2365
2370
2375
2380
2385
2390
2395
2400
2405
2410
2415
2420
2425
2430
2435
2440
2445
2450
2455
2460
2465
2470
2475
2480
2485
2490
2495
2500
2505
2510
2515
2520
2525
2530
2535
2540
2545
2550
2555
2560
2565
2570
2575
2580
2585
2590
2595
2600
2605
2610
2615
2620
2625
2630
2635
2640
2645
2650
2655
2660
2665
2670
2675
2680
2685
2690
2695
2700
2705
2710
2715
2720
2725
2730
2735
2740
2745
2750
2755
2760
2765
2770
2775
2780
2785
2790
2795
2800
2805
2810
2815
2820
2825
2830
2835
2840
2845
2850
2855
2860
2865
2870
2875
2880
2885
2890
2895
2900
2905
2910
2915
2920
2925
2930
2935
2940
2945
2950
2955
2960
2965
2970
2975
2980
2985
2990
2995
3000
3005
3010
3015
3020
3025
3030
3035
3040
3045
3050
3055
3060
3065
3070
3075
3080
3085
3090
3095
3100
3105
3110
3115
3120
3125
3130
3135
3140
3145
3150
3155
3160
3165
3170
3175
3180
3185
3190
3195
3200
3205
3210
3215
3220
3225
3230
3235
3240
3245
3250
3255
3260
3265
3270
3275
3280
3285
3290
3295
3300
3305
3310
3315
3320
3325
3330
3335
3340
3345
3350
3355
3360
3365
3370
3375
3380
3385
3390
3395
3400
3405
3410
3415
3420
3425
3430
3435
3440
3445
3450
3455
3460
3465
3470
3475
3480
3485
3490
3495
3500
3505
3510
3515
3520
3525
3530
3535
3540
3545
3550
3555
3560
3565
3570
3575
3580
3585
3590
3595
3600
3605
3610
3615
3620
3625
3630
3635
3640
3645
3650
3655
3660
3665
3670
3675
3680
3685
3690
3695
3700
3705
3710
3715
3720
3725
3730
3735
3740
3745
3750
3755
3760
3765
3770
3775
3780
3785
3790
3795
3800
3805
3810
3815
3820
3825
3830
3835
3840
3845
3850
3855
3860
3865
3870
3875
3880
3885
3890
3895
3900
3905
3910
3915
3920
3925
3930
3935
3940
3945
3950
3955
3960
3965
3970
3975
3980
3985
3990
3995
4000
4005
4010
4015
4020
4025
4030
4035
4040
4045
4050
4055
4060
4065
4070
4075
4080
4085
4090
4095
4100
4105
4110
4115
4120
4125
4130
4135
4140
4145
4150
4155
4160
4165
4170
4175
4180
4185
4190
4195
4200
4205
4210
4215
4220
4225
4230
4235
4240
4245
4250
4255
4260
4265
4270
4275
4280
4285
4290
4295
4300
4305
4310
4315
4320
4325
4330
4335
4340
4345
4350
4355
4360
4365
4370
4375
4380
4385
4390
4395
4400
4405
4410
4415
4420
4425
4430
4435
4440
4445
4450
4455
4460
4465
4470
4475
4480
4485
4490
4495
4500
4505
4510
4515
4520
4525
4530
4535
4540
4545
4550
4555
4560
4565
4570
4575
4580
4585
4590
4595
4600
4605
4610
4615
4620
4625
4630
4635
4640
4645
4650
4655
4660
4665
4670
4675
4680
4685
4690
4695
4700
4705
4710
4715
4720
4725
4730
4735
4740
4745
4750
4755
4760
4765
4770
4775
4780
4785
4790
4795
4800
4805
4810
4815
4820
4825
4830
4835
4840
4845
4850
4855
4860
4865
4870
4875
4880
4885
4890
4895
4900
4905
4910
4915
4920
4925
4930
4935
4940
4945
4950
4955
4960
4965
4970
4975
4980
4985
4990
4995
5000
5005
5010
5015
5020
5025
5030
5035
5040
5045
5050
5055
5060
5065
5070
5075
5080
5085
5090
5095
5100
5105
5110
5115
5120
5125
5130
5135
5140
5145
5150
5155
5160
5165
5170
5175
5180
5185
5190
5195
5200
5205
5210
5215
5220
5225
5230
5235
5240
5245
5250
5255
5260
5265
5270
5275
5280
5285
5290
5295
5300
5305
5310
5315
5320
5325
5330
5335
5340
5345
5350
5355
5360
5365
5370
5375
5380
5385
5390
5395
5400
5405
5410
5415
5420
5425
5430
5435
5440
5445
5450
5455
5460
5465
5470
5475
5480
5485
5490
5495
5500
5505
5510
5515
5520
5525
5530
5535
5540
5545
5550
5555
5560
5565
5570
5575
5580
5585
5590
5595
5600
5605
5610
5615
5620
5625
5630
5635
5640
5645
5650
5655
5660
5665
5670
5675
5680
5685
5690
5695
5700
5705
5710
5715
5720
5725
5730
5735
5740
5745
5750
5755
5760
5765
5770
5775
5780
5785
5790
5795
5800
5805
5810
5815
5820
5825
5830
5835
5840
5845
5850
5855
5860
5865
5870
5875
5880
5885
5890
5895
5900
5905
5910
5915
5920
5925
5930
5935
5940
5945
5950
5955
5960
5965
5970
5975
5980
5985
5990
5995
6000
6005
6010
6015
6020
6025
6030
6035
6040
6045
6050
6055
6060
6065
6070
6075
6080
6085
6090
6095
6100
6105
6110
6115
6120
6125
6130
6135
6140
6145
6150
6155
6160
6165
6170
6175
6180
6185
6190
6195
6200
6205
6210
6215
6220
6225
6230
6235
6240
6245
6250
6255
6260
6265
6270
6275
6280
6285
6290
6295
6300
6305
6310
6315
6320
6325
6330
6335
6340
6345
6350
6355
6360
6365
6370
6375
6380
6385
6390
6395
6400
6405
6410
6415
6420
6425
6430
6435
6440
6445
6450
6455
6460
6465
6470
6475
6480
6485
6490
6495
6500
6505
6510
6515
6520
6525
6530
6535
6540
6545
6550
6555
6560
6565
6570
6575
6580
6585
6590
6595
6600
6605
6610
6615
6620
6625
6630
6635
6640
6645
6650
6655
6660
6665
6670
6675
6680
6685
6690
6695
6700
6705
6710
6715
6720
6725
6730
6735
6740
6745
6750
6755
6760
6765
6770
6775
6780
6785
6790
6795
6800
6805
6810
6815
6820
6825
6830
6835
6840
6845
6850
6855
6860
6865
6870
6875
6880
6885
6890
6895
6900
6905
6910
6915
6920
6925
6930
6935
6940
6945
6950
6955
6960
6965
6970
6975
6980
6985
6990
6995
7000
7005
7010
7015
7020
7025
7030
7035
7040
7045
7050
7055
7060
7065
7070
7075
7080
7085
7090
7095
7100
7105
7110
7115
7120
7125
7130
7135
7140
7145
7150
7155
7160
7165
7170
7175
7180
7185
7190
7195
7200
7205
7210
7215
7220
7225
7230
7235
7240
7245
7250
7255
7260
7265
7270
7275
7280
7285
7290
7295
7300
7305
7310
7315
7320
7325
7330
7335
7340
7345
7350
7355
7360
7365
7370
7375
7380
7385
7390
7395
7400
7405
7410
7415
7420
7425
7430
7435
7440
7445
7450
7455
7460
7465
7470
7475
7480
7485
7490
7495
7500
7505
7510
7515
7520
7525
7530
7535
7540
7545
7550
7555
7560
7565
7570
7575
7580
7585
7590
7595
7600
7605
7610
7615
7620
7625
7630
7635
7640
7645
7650
7655
7660
7665
7670
7675
7680
7685
7690
7695
7700
7705
7710
7715
7720
7725
7730
7735
7740
7745
7750
7755
7760
7765
7770
7775
7780
7785
7790
7795
7800
7805
7810
7815
7820
7825
7830
7835
7840
7845
7850
7855
7860
7865
7870
7875
7880
7885
7890
7895
7900
7905
7910
7915
7920
7925
7930
7935
7940
7945
7950
7955
7960
7965
7970
7975
7980
7985
7990
7995
8000
8005
8010
8015
8020
8025
8030
8035
8040
8045
8050
8055
8060
8065
8070
8075
8080
8085
8090
8095
8100
8105
8110
8115
8120
8125
8130
8135
8140
8145
8150
8155
8160
8165
8170
8175
8180
8185
8190
8195
8200
8205
8210
8215
8220
8225
8230
8235
8240
8245
8250
8255
8260
8265
8270
8275
8280
8285
8290
8295
8300
8305
8310
8315
8320
8325
8330
8335
8340
8345
8350
8355
8360
8365
8370
8375
8380
8385
8390
8395
8400
8405
8410
8415
8420
8425
8430
8435
8440
8445
8450
8455
8460
8465
8470
8475
8480
8485
8490
8495
8500
8505
8510
8515
8520
8525
8530
8535
8540
8545
8550
8555
8560
8565
8570
8575
8580
8585
8590
8595
8600
8605
8610
8615
8620
8625
8630
8635
8640
8645
8650
8655
8660
8665
8670
8675
8680
8685
8690
8695
8700
8705
8710
8715
8720
8725
8730
8735
8740
8745
8750
8755
8760
8765
8770
8775
8780
8785
8790
8795
8800
8805
8810
8815
8820
8825
8830
8835
8840
8845
8850
8855
8860
8865
8870
8875
8880
8885
8890
8895
8900
8905
8910
8915
8920
8925
8930
8935
8940
8945
8950
8955
8960
8965
8970
8975
8980
8985
8990
8995
9000
9005
9010
9015
9020
9025
9030
9035
9040
9045
9050
9055
9060
9065
9070
9075
9080
9085
9090
9095
9100
9105
9110
9115
9120
9125
9130
9135
9140
9145
9150
9155
9160
9165
9170
9175
9180
9185
9190
9195
9200
9205
9210
9215
9220
9225
9230
9235
9240
9245
9250
9255
9260
9265
9270
9275
9280
9285
9290
9295
9300
9305
9310
9315
9320
9325
9330
9335
9340
9345
9350
9355
9360
9365
9370
9375
9380
9385
9390
9395
9400
9405
9410
9415
9420
9425
9430
9435
9440
9445
9450
9455
9460
9465
9470
9475
9480
9485
9490
9495
9500
9505
9510
9515
9520
9525
9530
9535
9540
9545
9550
9555
9560
9565
9570
9575
9580
9585
9590
9595
9600
9605
9610
9615
9620
9625
9630
9635
9640
9645
9650
9655
9660

0 with gypsum soil collected from the study area. Soil was
 collected from a relatively small area to avoid heterogeneity
 in the substrate, and it was thoroughly mixed and sieved
 afterwards. A total of 5394 seeds were sown (2–9 per cavity
 and 80–300 per mother plant, depending on seed availability).
 5 Seeds were monitored twice a week during September
 2006, and every two weeks during October and November.
 They were considered to have germinated as soon as cotyledons
 emerged above the soil. During this period, trays were
 periodically watered to ensure permanent humidity, and
 10 temperature in the experiment was controlled to match the
 optimum reported for this species (Escudero et al. 1997). Final
 germination percentage and number of days required for
 germination of 50% of the total number of germinated seeds
 (t_{50}) were calculated for each mother plant. In the situations
 15 where several seeds germinated in the same cavity, extra
 seedlings were clipped immediately and the first one to
 emerge was kept. These clipped seedlings were not included
 in the survival analyses but they were considered for germination
 analyses. Seedling survival rate was evaluated since
 20 seedling emergence to the beginning of the water stress
 experiment.

On 5 December 2006, a total of 360 (25–53 per maternal
 environment) surviving healthy seedlings were transplanted
 into randomly arranged pots (500 ml each) filled with the
 same type of soil used for the germination trays. During
 25 this period, pots were watered twice a week to keep them
 moist. On 12 March 2007, number of leaves and major and
 minor diameter of the rosette were recorded for each seedling.
 Diameters were measured using a digital calliper with an
 accuracy of 0.01 mm. Rosette area was calculated as the
 area of an ellipse. These measurements were repeated after
 30 two months in early May.

35 Water stress experiment and physiological measurements

An experiment simulating Mediterranean summer drought
 was carried out in May–June 2007 to evaluate the effect of
 the maternal environment on seedling performance and
 40 plasticity in response to stressful conditions mimicking field
 conditions. We determined the survival curve along the

drought experiment and measured maximal photochemical
 efficiency of photosystem II (Fv/Fm), maximum net photo-
 synthetic rate (Amax) and instantaneous water use efficiency
 (iWUE) at two different soil water content. Volumetric soil
 water content (SWC) was determined for a random subsam-
 65 ple of 40 pots twice each week. Probes comprised of two parallel
 stainless steel rods, 5 cm in length. Separation between
 their axes was also 5 cm. In order to obtain optimal mea-
 surements, the probes were inserted in the pots before the
 seedling transplant to avoid interferences with plant growth
 70 and to ensure the maximum contact between the rods and
 the soil (Topp and Davis 1985). Also, all pots were weighed
 twice a week to determine water loss. Water stress was slowly
 imposed adjusting soil water content of the pots by replacing
 part of the transpired water (Fig. 1). Measurements were
 75 taken before watering to obtain an estimate of maximum
 stress between two watering events.

Physiological measurements were carried out at two
 levels of soil water content: 1) well-watered conditions
 (20–25% SWC), and 2) low-watered conditions (5–6%
 80 SWC). It has been shown that effects of water stress on
 seedling performance of Mediterranean woody plants are
 noticeable for values of SWC below 10% (Valladares
 et al. 2005). Therefore, soil was slowly dried and SWC was
 maintained below this level during ten days before low-
 85 watered measurements (Fig. 1). Air temperature and available
 photosynthetic photon flux density (PPFD) were recorded
 every 5 min during the whole water stress experiment with
 a data logger. Mean daily temperature for this period was
 25.3°C; mean maximum and minimum temperature were
 39.3°C and 14.8°C respectively; and mean daily PPFD
 (400–700 nm) was 31.6 mol m² d⁻¹. These conditions were
 very similar to the conditions experienced by mother plants
 in the field (Matesanz unpubl.).

The maximal photochemical efficiency of photosystem
 II (Fv/Fm) in one fully expanded leaf was determined for
 all seedlings (nM360) with a portable pulse-modulated
 fluorometer. Measurements were taken from 8:00 to 10:00
 95 GMT in healthy leaves dark-adapted for 30 min with leaf
 clips provided by the manufacturer. Minimal (Fo) and
 maximal (Fm) fluorescence were measured, and these values
 were used to calculate Fv/Fm as $F_v/F_m = (F_m - F_o)/F_m$
 100

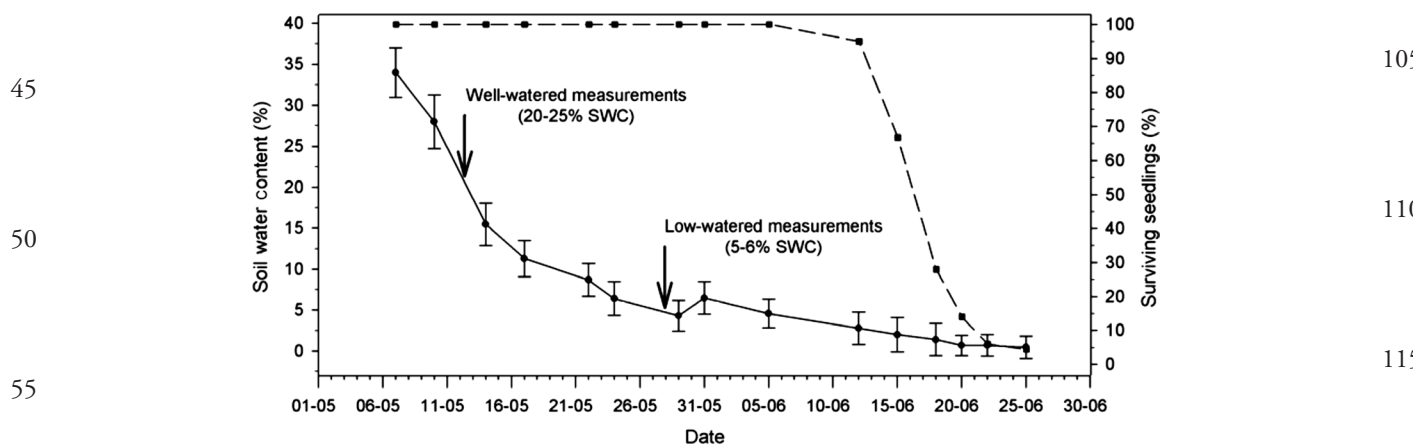


Figure 1. Temporal dynamics of soil water content in the pots during the water stress experiment. The dashed line shows the percentage of surviving seedlings at each soil water content. The arrows denote two levels of soil water content (SWC) were the physiological measurements were done.

0 (Maxwell and Johnson 2000). Maximum net photosynthetic
rate (Amax) was measured in 80 randomly chosen seedlings
10 (ten per maternal environment) in one fully-expanded
leaf using a portable gas exchange system. The leaves were
5 exposed to an atmospheric CO₂ concentration of 400 μl
l⁻¹ (using the built-in CO₂ controller) and saturating light
(K1500 μmol m⁻² s⁻¹ PAR). Seedlings' leaves were too nar-
row for the standard chamber, so the 'Arabidopsis-chamber'
was used. This chamber lacks an internal light source, and
10 measurements were taken using an external source of cold
light. Measurements were performed at 25–26°C (i.e. growth
temperature) and relative humidity of 45–50%. Instanta-
neous water use efficiency (iWUE) was estimated as the ratio
between maximum photosynthetic rate and stomatal con-
ductance (Gulías et al. 2002).

15 Watering was decreased after low-watered measure-
ments to keep soil water content below 5%, so the effects of
maternal environment on seedling survival to drought could
be addressed. All pots were examined every day until seed-
ling death, and pot weight was then recorded to calculate
20 soil water content. We labelled as dead those seedlings pre-
sented no photosynthetically active leaves (i.e. green and
bendy leaves) and exhibited loss of flexibility in the stems.
No resprouting was observed after watering in a random
sample of seedlings previously labelled as dead, confirming
25 our estimation of mortality. SWC for each pot at seedling
death was estimated as: SWCM(soil weight–dry soil weight)/
soil weight, were soil weightMpot weight–(empty pot
weight + TDR probes weight). Soil was dried at ambient
temperature during two weeks to obtain the dry soil weight
30 measurement. We checked in a random soil sample dried in
an oven at 60°C that SWC was negligible after this period.

Statistical analysis

35 Analyses were carried out using SAS 9.0 (SAS Inst.). The
effects of the three global change drivers (fragmentation,
habitat quality and mother plant water availability, and their
interactions) on germination percentage, germination rate
(t₅₀), survival rate and seedling growth of *C. hyssopifolia*
40 were explored fitting generalized linear mixed models using
the procedure GLIMMIX of SAS. We used the restricted
maximum-likelihood method (REML) and type III sum of
squares. Global change drivers were included in our models
as fixed effects (one degree of freedom per treatment) and
45 mother plant identity (nested within fragmentation \downarrow habi-
tat quality \downarrow water availability interaction) as a random fac-
tor. GLMMs allow the analysis of response variables that are
generally non-normally distributed, such as percentages, by
adjusting adequate function responses and are appropriate
50 because they allow for a distinction between fixed and ran-
dom effects in the models (see Littell et al. 1996 and Bolker
et al. 2008 for further details). Germination and final sur-
vival rate were modelled as binomial distributions with a
logit link function, and t₅₀, number of leaves per seedling
55 and seedling rosette size were modelled using a normal dis-
tribution with an identity link function. Effect of the mother
plant identity was tested using Wald Z-statistic test, which
is appropriate for large samples (Littell et al. 1996). Post-hoc
tests were performed using the LSMEANS option of the
60 GLIMMIX procedure.

Survival curves of seedlings of different treatments were
61 estimated by means of the Kaplan–Meier product-limit
method and compared using non-parametric logrank test
(Pyke and Thompson 1986). This statistical analysis was
65 performed using STATISTICA 6.0 (Statsoft).

Effects of global change drivers on physiological
measurements in the water stress experiment were explored
separately for each level of seedlings' water availability (well
watered and low-watered conditions) due to the complex-
70 ity of the model. Differences in Fv/Fm, Amax and iWUE
values among factors were explored by means of GLMMs
including mother plant identity as a random factor following
the same approach as used for previously described GLMMs.
We assumed a binomial error distribution with a logit link
75 function in Fv/Fm variable response and a normal error dis-
tribution with an identity link function in Amax and iWUE
variables.

To test treatment effect (water conditions) and treatment
L maternal environment interaction effect we used additional
repeated measures analyses performed by means GLIMMIX
80 procedure of SAS. Maternal environment (resulting from
the combination of the three global change drivers: habitat
fragmentation, changes in habitat quality, and water avail-
ability) was in this case a factor with eight different levels
corresponding to each maternal environment. Individual
85 seedling (for Fv/Fm), and individual mother plant (for
Amax and iWUE) were considered as random factors (sub-
ject), and treatment (within-subject), and maternal environ-
ment (among-subject) were considered fixed factors. Finally,
effects of global change factors on drought seedling tolerance
90 (i.e. SWC in the day of seedling death) were explored fol-
lowing the same approach as used for previous GLMMs. We
assumed binomial distributions with a logit link function in
this case.

Results

Germination and survival under well-watered conditions

Germination percentages were in general low. Mean germi-
nation percentage of plants from each maternal environment
ranged from 13% to 21%. We found a positive maternal
effect of water availability on germination, with lower ger-
105 mination percentages of the seeds from non-watered mother
plants (Table 1, Fig. 2a). Likewise, we found a significant
three-way interaction (fragmentation \downarrow habitat quality \downarrow
water availability) on this trait, with lower values of germina-
tion of the seeds from the least favourable maternal environ-
110 ment, i.e. non-watered plants from small fragments of poor
habitat quality (Table 1, Fig. 2a). In addition, fragmentation
also had a significant and negative effect on the number of
days required for germination of 50% of the total germinated
seeds (t₅₀). Seeds of plants from large fragments germinated
115 faster than those from small fragments (Table 1, Fig. 2b).

Percentage of surviving seedlings from each environment
ranged between 32% and 60% (Appendix 1). We found a
significant and negative effect of fragment size on final sur-
vival rate (Table 1): seedlings of mothers from large fragments
had higher final survival. Moreover, Kaplan–Meier analysis
121

0 Table 1. Results for the fixed effects of generalized linear mixed models (GLMMs) used to test the effects of global change factors (fragmentation, habitat quality and water availability, and their interactions) on germination percentage, time at which 50% of seeds germinated (t_{50}) and final survival rate. Germination and survival were modelled using binomial distributions, and t_{50} with normal distribution. $p < 0.05$ are in bold. $n = 39$ mother plants.

Source of variation	Germination			t_{50}			Survival		
	F	DF	p	F	DF	p	F	DF	p
Fragmentation (F)	0.62	1	0.433	4.22	1	0.043	4.18	1	0.041
Habitat quality (Q)	0.55	1	0.459	0.22	1	0.642	0.28	1	0.596
Water availability (W)	8.10	1	0.005	0.93	1	0.336	0.05	1	0.816
F × Q	0.54	1	0.4639	0.18	1	0.674	0.11	1	0.735
F × W	0.77	1	0.3824	1.27	1	0.262	2.07	1	0.151
Q × W	0.53	1	0.469	0.45	1	0.502	0.04	1	0.837
F × Q × W	0.12	1	0.043	0.57	1	0.450	2.72	1	0.099

15 revealed significant differences in the survival function of seedlings of different mother plants, with those from large fragments having a slower rate of mortality than those from small fragments (log rank $M = 2.54$, $p = 0.010$, Fig. 3).

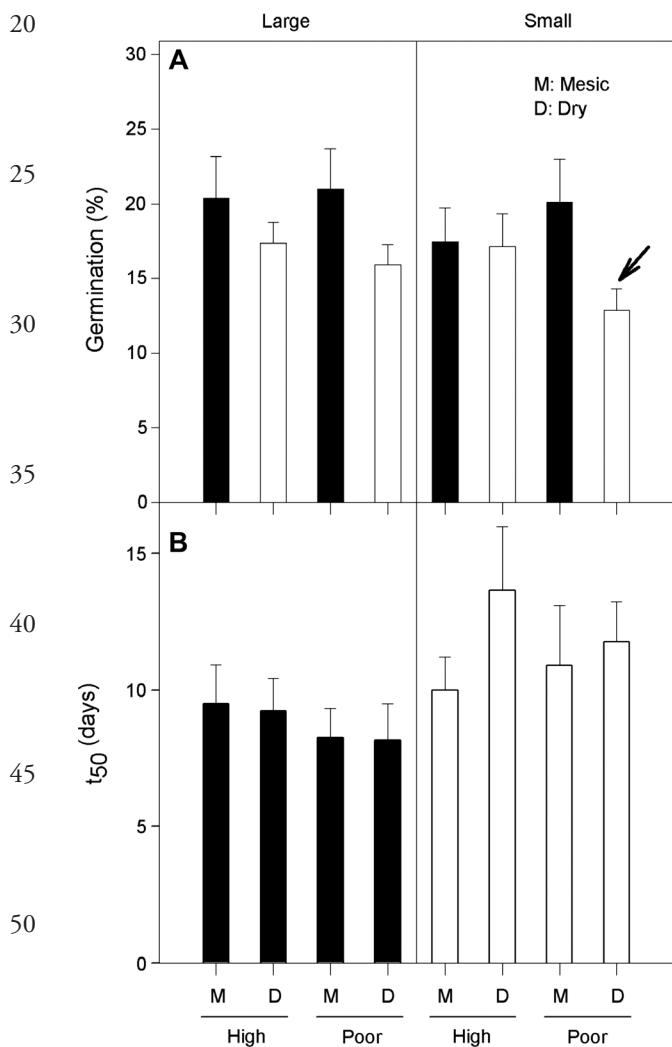
Mother plant identity did not have any significant effect on these variables ($Z < 1.20$, $p > 0.11$).

Seedling growth

There was a marginally significant and positive effect of mother plant water availability on rosette size in March measurements (FM4.12, DFM1, $p = 0.052$). Seedlings from watered mother plants had significantly higher area than non-watered ones at this time (mean \pm SE: 24.06 ± 0.67 and 22.70 ± 0.61 cm², respectively). However, no significant effects of global change drivers or their interactions were found on the number of leaves per seedling ($F < 0.44$, DFM1, $p > 0.510$ in all cases) or on rosette size ($F < 2.65$, DFM1, $p > 0.113$ in all cases) in May measurements. Mother plant identity did not have any significant effect on these variables ($Z < 1.05$, $p > 0.14$).

Seedling performance and survival under water stress

We did not find any significant effect of global change drivers on maximal photochemical efficiency (Fv/Fm) in either well-watered or low-watered conditions (Table 2). Repeated measures analysis showed that Fv/Fm values were significantly



55 Figure 2. Mean values of (a) germination percentage and, (b) number of days required for germination of 50% of the total seed number, for the eight different maternal environments with different fragment size (small and large), habitat quality (high and poor), and water conditions (well- and low-watered). Different colours in the bars indicate significant differences at the 5% level for the main effects.

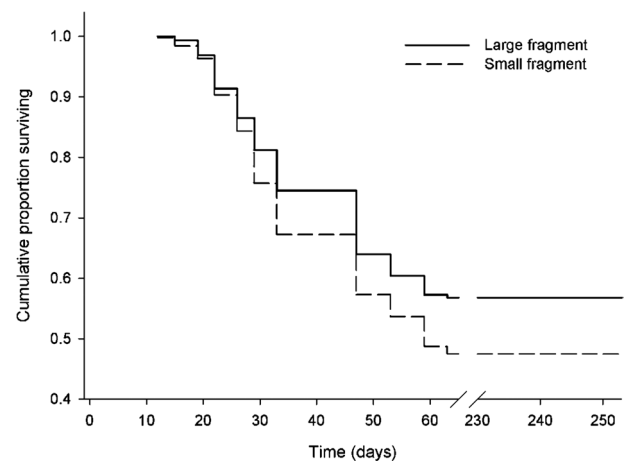


Figure 3. Kaplan-Meier survivorship curves for seedlings of mother plants from large and small fragments. Curves differed significantly at the 5% level in the log-rank test. Figure shows survival curves only for small versus large fragments because only fragmentation had an effect on final survival rate.

0 Table 2. Results for the fixed effects of generalized linear mixed models (GLMMs) used to test the effects of global change factors (fragmentation, habitat quality and water availability, and their interactions) on seedling performance under well-watered and low-watered conditions in the water stress experiment. Analyses were based on a GLMM with binomial error and logit link for maximal photochemical efficiency (F_v/F_m), and with normal distributions and identity function link for maximum photosynthetic rate (A_{max}) and water use efficiency (iWUE). $p < 0.01$ are in bold.

Source of variation	F_v/F_m			A_{max}			iWUE		
	F	DF	P	F	DF	P	F	DF	P
a) Well-watered									
Fragmentation (F)	0.98	1	0.323	12.64	1	< 0.001	1.23	1	0.267
Habitat quality (Q)	0.66	1	0.416	3.58	1	0.058	0.37	1	0.542
Water availability (W)	0.18	1	0.669	0.35	1	0.556	1.00	1	0.317
F × Q	0.63	1	0.427	2.26	1	0.132	3.69	1	0.054
F × W	0.02	1	0.887	2.00	1	0.157	1.37	1	0.241
Q × W	1.41	1	0.236	4.77	1	0.028	0.84	1	0.358
F × Q × W	2.32	1	0.129	6.57	1	0.010	1.90	1	0.167
b) Low-watered									
Fragmentation (F)	0.01	1	0.924	1.09	1	0.297	0.96	1	0.329
Habitat quality (Q)	0.62	1	0.432	0.85	1	0.359	0.47	1	0.494
Water availability (W)	0.02	1	0.902	0.00	1	0.976	0.83	1	0.355
F × Q	0.53	1	0.467	1.23	1	0.205	2.48	1	0.120
F × W	0.45	1	0.502	1.11	1	0.297	0.40	1	0.531
Q × W	1.35	1	0.246	0.30	1	0.584	0.94	1	0.336
F × Q × W	4.89	1	0.066	0.81	1	0.326	0.71	1	0.401

25 lower under low-watered (FM3.27, DFM1, $p < 0.001$; mean \pm SE: 0.82 ± 0.04 and 0.68 ± 0.03 , respectively; Fig. 4), although they were still relatively high.

30 Maximum photosynthetic rate (A_{max}) was negatively affected by fragmentation under well-watered conditions. Likewise, we found a significant three-way interaction (fragmentation \times habitat quality \times water availability) under well-watered conditions, indicating higher values for seedlings from non-watered mother plants from large fragments of poor habitat quality (Table 2). Repeated measures analysis showed that A_{max} was also significantly lower under low-watered conditions (FM58.22, DFM1, $p < 0.001$; mean \pm SE: 9.27 ± 0.33 and 2.58 ± 0.31 for well-watered and low-watered conditions respectively; Fig. 4). In this case, we found a significant treatment \times maternal interaction, where seedlings of watered mother plants from small fragments of poor habitat quality showed a lower A_{max} reduction (FM26.44, DFM7, $p < 0.001$).

45 Water use efficiency (iWUE) was significantly higher under water stress (FM19.57, DFM1, $p < 0.001$; mean \pm SE: 11.38 ± 1.33 and 30.04 ± 2.14 for well-watered and low-watered conditions respectively; Fig. 4) and no effect of global change drivers were found for this variable (Table 2).

50 Likewise, there was no significant effect of the global change factors ($F < 2.14$, DFM1, $p < 0.158$) or the mother plant identity (ZM 1.59, pM0.156) on seedling survival to drought (i.e. SWC in the day of the seedling death). Ninety-five percent of the seedlings survived until soil water content was as low as 3%, and they tolerated SWC values below 5% for many days (Fig. 1).

Discussion

60 Overall, we found a significant effect of the global change drivers on the offspring of *Centaurea hyssopifolia*. Specifi-

85 cally, we found an effect of fragmentation on germination rate and seedling performance, matching the patterns found for other fragmented populations of self-incompatible species (Menges 1991, Kolb 2005). Germination under controlled conditions of the seeds from small fragments was lower and slower, and seedling mortality was higher and occurred faster. Likewise, we found a positive effect of water availability experienced by mother plants on germination. Finally, we detected a significant three-way interaction of the three global change drivers on the germination percentage; i.e. it was lowest in the least favourable environment (non-watered mother plants from small fragments of poor habitat quality). This result highlights the importance of multifactor experiments, as non-additive synergistic effects among global change drivers have been shown to affect plant responses (Sala et al. 2000).

90 Negative effects of fragmentation on germination and survival may be due to several non-exclusive reasons: genetic deterioration, quality of the available pollen for plants, and other maternal environment effects related to habitat fragmentation. In small fragments, pollinators abundance and behaviour may be profoundly affected, decreasing the abundance and the quality of available pollen (Aizen et al. 2002, Duncan et al. 2004, Aguilar et al. 2006, Lopes and Buzzato 2007). In self-incompatible species, as in our study plant, this fact may lead to a decrease in the amount of potential mates, and to the increase of crosses among related congeners (biparental inbreeding), which in turn may increase homozygosity and other deleterious genetic effects linked to inbreeding. Furthermore, reductions in pollen competition and gametes selectivity, before and after fertilization, may reinforce these negative effects on seed viability, germination, and also on offspring fitness (Colling et al. 2004). Kolb (2005) discussed the role of genetic effects to explain the low seedling survival of *Phyteuma spicatum* in small and fragmented populations. Several authors have tried

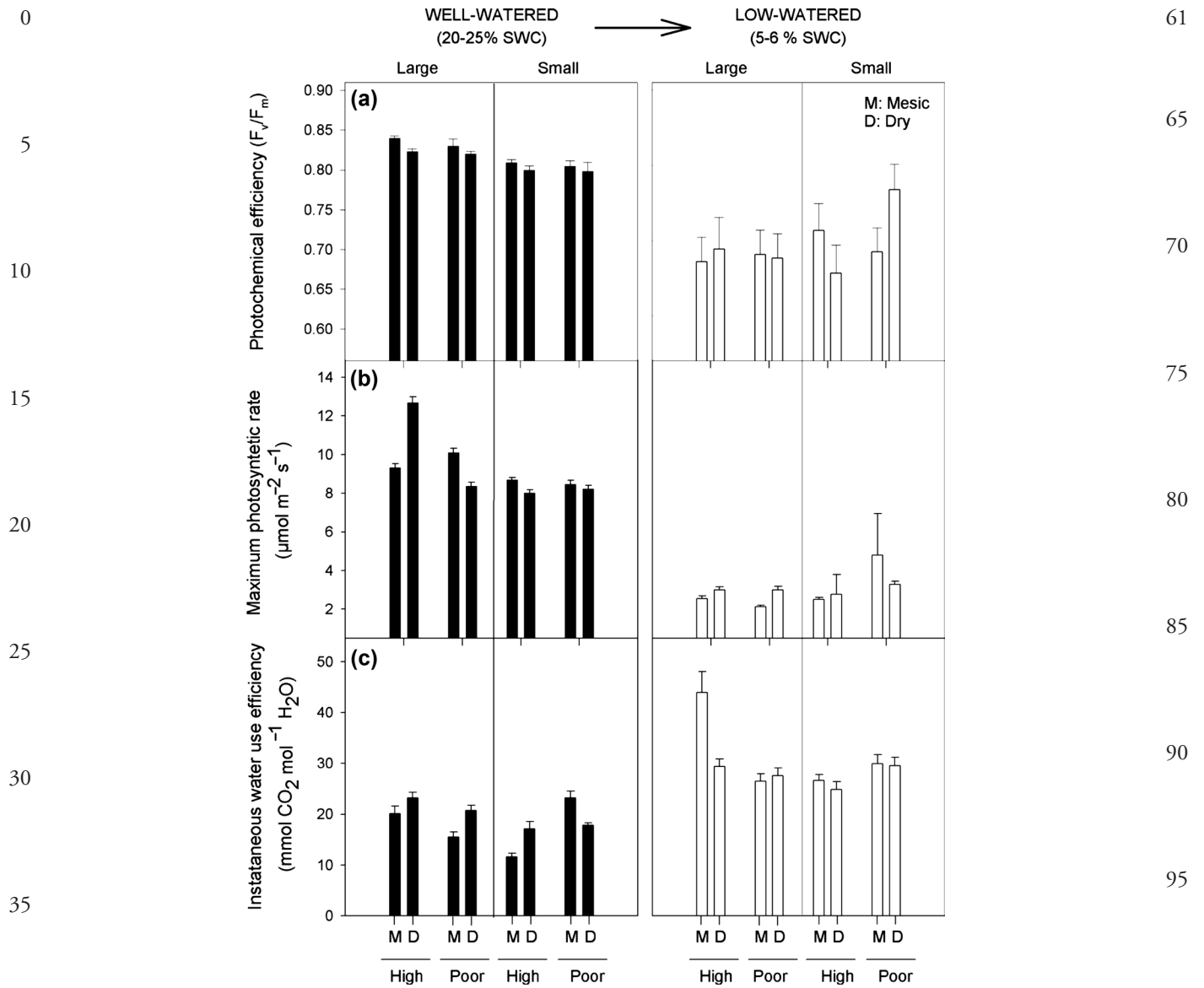


Figure 4. Mean values of (a) photochemical efficiency, (b) maximum photosynthetic rate and (c) water use efficiency of seedlings from the different maternal environments in well (left panels) and low-watered conditions (right panels). Different colours of the bars show significant differences between values in well- and low-watered conditions at the 5% significance level. Error bars represent one standard error of the mean.

to separate this so-called genetic effect from the maternal environment when describing transgenerational effects (Weiner et al. 1997). However, it is not possible to fully disentangle the genetic component of this response from the ecological component (maternal environment). In our study, some kind of genuine genetic effects may be responsible for the observed results. This is supported by previous findings of the same study population, where plants from small fragments had lower viable seed production and lower adult plant survival (Matesanz et al. 2009) which are traits frequently related to inbreeding (reviewed by Lienert 2004). An effect of fragmentation on subsequent life stages would support the genetic hypothesis to a greater extent (Roach and Wulff 1987). Despite our results do not show a significant effect of fragmentation on rosette size or number of leaves (as measures of plant growth), the effects of

inbreeding depression may arise under more stressful natural conditions (Ramsey and Vaughton 2000, Kolb 2005).

We also found that water shortage during mother plant growth exerted a negative effect on the germination of its seeds. The effect of water stress during mother plant life has been found to negatively affect germination in other plant species (Acosta and Kohashi 1989, Nielsen and Nelson 1998). Furthermore, in our case, water availability of mother plants had a positive effect on seedling growth, although it was only visible in the first measurement date. Transmission mechanisms can explain this genuine maternal environmental effect by: (1) affecting the quantity and quality of the resources supplied to the seeds (Weiner et al. 1997), (2) changing the structure and thickness of the seed coat (Lacey et al. 1997), (3) inducing abortion of seeds (Marshall and Ellstrand 1988) and (4) affecting the levels

0 of hormones, enzymes, etc during germination and early performance. Water stress during seed formation must have affected seed provisioning and enzymatic activity related to germination and initial development of the seedling, while subsequent stages of the offspring life can be expected to be less influenced (Roach and Wulff 1987).

5 The effect of water shortage on germination was boosted by the negative effect of both fragmentation and poor habitat quality. This finding concurs with Kolb (2005), who found that small-sized populations are more sensitive to unfavourable environmental conditions, and again highlights the importance of multifactor studies. This is particularly relevant for the Mediterranean region (Christensen et al. 2007) where more frequent and severe drought episodes are predicted to occur, leading to increased aridity. This, together with longer time for germination and an advanced mortality of seedlings from small fragments, may translate into lower water availability at the seedling stage, as seedlings would be smaller at the beginning of summer drought, which in turn can translate into higher mortality.

20 All the physiological variables were affected by water stress, but contrary to our expectations, seedlings' response did not differ in relation to their maternal environment. Although maximal photochemical efficiency (Fv/Fm) values are generally considered to be more sensitive to high temperature and light intensity than to water stress (Long et al. 1994, Llorens et al. 2003), we found decreases in Fv/Fm under the optimum values (0.83 according to Maxwell and Johnson 2000). Aragón et al. (2008) found that even small deviations in Fv/Fm values of a Mediterranean chamaephyte (*Helianthemum squamatum*) had strong consequences on plant fitness, and highlighted that the timing of stressful events may be even more important than the stress intensity. On the other hand, water use efficiency increased significantly under low-watered conditions, probably as a consequence of the reduction of stomatal conductance while maintaining similar photosynthetic rates, and concurs with other studies (Valladares et al. 2005, Liu et al. 2005). Valladares and Sánchez-Gómez (2006) identified a second stage where iWUE decreased pronouncedly as a response to prolonged and severe water stress, when SWC was around 7%. This is in contrast with our study, where seedlings showed an increase in iWUE under SWC of 5–6%. In this context, it is noteworthy that 95% of the plants survived until SWC was extremely low (3%), highlighting the capacity of this species to cope with water stress, and agreeing with results for other gypsum species (Aragón et al. 2007).

45 In conclusion, our results show that combinations of global change drivers can have effects not only on adult plant performance in natural conditions but also transgenerational effects on the plant offspring, as shown by the significant effect of the maternal environment on early fitness components and offspring performance under controlled conditions. These results suggest that detrimental effects of global change drivers can affect demographic trends not only by constraining the fertility rates of the population but also by conditioning the performance of future generations. Our findings also highlight the importance of human-mediated changes on population persistence, as they affected not only germination and seedling survival but also the capacity to exploit spring resource pulses, a typical feature of Mediterranean environments, and suggest that these effects are a

61 complex sum of both genetic and ecological factors. Despite the ability of seedlings to cope with water stress found for this species, our results show high vulnerability to the predicted climate change, as shown by its effects on germination. Finally, our study revealed the importance of including not only different global change drivers but also their assessing their effects on the performance of the descendants.

70 *Acknowledgements*—The authors would like to thank José Margalef (URJC) and Lorena Suárez (UdeC) for their help in the greenhouse. Financial support was provided by the Spanish Ministry of Education and Science (ECOCLIM, CGL2007-66066-C04-02/BOS and EXTREM, CGL 2006-09431) and by Programa de Actividades de I+D de la Comunidad de Madrid REMEDINAL-CM (S-0505/AMB/000335).

80 References

- Acosta, G. and Kohashi, S. 1989. Effect of water stress on growth and yield of indeterminate dry-bean (*Phaseolus vulgaris*) cultivars.—*Field Crops Res.* – 20: 81–93.
- Ågren, J. 1996. Population size, pollinator limitation, and seed set in the self-incompatible herb *Lythrum Salicaria*. – *Ecology* 77: 1779–1790.
- Aguilar, R. et al. 2006. Plant reproductive susceptibility to habitat fragmentation: review and synthesis through a meta-analysis. – *Ecol. Lett.* 9: 968–980.
- Aizen, M. A. et al. 2002. Reproductive success in fragmented habitats: do compatibility systems and pollination specialization matter? – *J. Veg. Sci.* 13: 885–892.
- Alonso, B. and Valladares, F. 2008. International efforts on global change research.—In: Chuvieco E. (ed.), *Earth observation of global change: the role of satellite remote sensing in monitoring the global environment*. Springer, pp. 1–21.
- Aragón, C. F. et al. 2007. Environmental scales on the reproduction of a gypsophyte: a hierarchical approach. – *Ann. Bot.* 99: 519–527.
- Aragón, C. F. et al. 2008. Stress-induced dynamic adjustments of reproduction differentially affect fitness components of a semi-arid plant. – *J. Ecol.* 96: 222–229.
- Bezemer et al. 1998
- Bolker, B. et al. 2008. Generalized linear mixed models: a practical guide for ecology and evolution. – *Tree*. 1042: 1–9.
- Brys, R. et al. 2004. Reduced reproductive success in small populations of the self-incompatible *Primula vulgaris*. – *J. Ecol.* 92: 5–14.
- Chapin III, F. S. et al. 2001. Global biodiversity in a changing environment: scenarios for the 21st century.—Springer.
- Christensen, J. H. et al. 2007. Regional climate projections. Contribution of working group I to the 4th Assessment Rep. of the Intergovernmental Panel on Climate Change. Solomon S. et al. (eds). *Climate Change 2007: the physical science basis*.—Cambridge Univ. Press.
- Colling, G. et al. 2004. Effects of pollen quantity and quality on reproduction and offspring vigor in the rare plant *Scorzonera humilis* (Asteraceae). – *Am. J. Bot.* 91: 1774–1782.
- Donohue, K. 1999. Seed dispersal as a maternally influenced character: mechanism basis of maternal effects and selection on maternal characters in an annual plant. – *Am. Nat.* 154: 674–689.
- Donohue, K. and Schmitt, J. 1998. Maternal environmental effects on plants: adaptive plasticity?—In: Mosseau T. A. and Fox C. W. (eds), *Maternal effects as adaptations*. Oxford Univ. Press, pp. 137–158.

- 0 Duncan, D. H. et al. 2004. Plant isolation reduces outcross pollen receipt in a partially self-compatible herb. – *J. Ecol.* 92: 977–985.
- Eliason, S. A. and Allen, E. B. 1997. Exotic grass competition in suppressing native shrubland re-establishment. – *Restor. Ecol.* 5: 245–255.
- 5 Escudero, A. et al. 1997. Germination of gypsophytes and gypsogvags in semiarid central Spain. – *J. Arid Environ.* 36: 487–497.
- Etterson, J. R. and Galloway, L. F. 2002. The influence of light on paternal plants in *Campanula americana* (Campanulaceae): pollen characteristics and offspring traits. – *Am. J. Bot.* 89: 1899–1906.
- 10 Foley, J. A. et al. 2005. Global consequences of land use. – *Science* 309: 570–574.
- Galloway, L. F. 2001. Parental environmental effects on life history characters and plasticities in *Mimulus guttatus*. – *Evolution.* 49: 1095–1107.
- 15 Galloway, L. F. 2005. Maternal effects provide phenotypic adaptation to local environmental conditions. – *New Phytol.* 166: 93–100.
- Galloway L. F. and Etterson J. R. 2007. Transgenerational plasticity is adaptive in the wild. – *Science* 318: 1134–1136.
- 20 Gulías, J. et al. 2002. Photosynthetic responses to water deficit in six Mediterranean sclerophyll species: possible factors explaining the declining distribution of *Rhamnus ludovici-salvatoris*, an endemic Balearic species. – *Tree Physiol.* 22: 687–697.
- [AQ4] Gutterman, Y. 1993. Seed germination in desert plants.–Springer.
- Harrington, G. N. 1991. Effects of soil moisture on shrub seedling survival in a semi-arid grassland. – *Ecology* 72: 1138–1149.
- 25 Huxman et al. 2001
- Kéry, M. et al. 2000. Reduced fecundity and offspring performance in small populations of the declining grassland plants *Primula veris* and *Gentiana lutea*. – *J. Ecol.* 88: 17–30.
- 30 Kolb A. 2005. Reduced reproductive success and offspring survival in fragmented populations of the forest herb *Phyteuma spicatum*. – *J. Ecol.* 93: 1226–1237.
- Kosmas, C. et al. 2002. The effect of land use on soil erosion and land degradation under Mediterranean conditions.–In: Geeson N. A. et al. (eds), *Mediterranean desertification: a mosaic of processes and responses*, Wiley, pp. 57–70.
- 35 Lacey, E. P. 1996. Parental effects in *Plantago lanceolata* L.: a grow chamber experiment to examine pre-and postzygotic temperature effects. – *Evolution* 50: 865–878.
- Lacey, E. P. 1998. What is an adaptive environmentally induced parental effect?–In: Mosseau T. A. and Fox C. W. (eds), *Maternal effects as adaptations*. Oxford Univ. Press, pp. 54–66.
- 40 Lacey, E. P. et al. 1997. Parental effects on seed mass: seed coat but not embryo/endosperm effects. – *Am. J. Bot.* 84: 1617–1620.
- Lau, J. A. et al. 2008. Transgenerational effects of global environmental change: long-term CO₂ and nitrogen treatments influence offspring growth response to elevate CO₂. – *Oecologia* 158: 141–150.
- 45 Lavorel, S. et al. 1998. Mediterranean terrestrial ecosystems: research priorities on global change effects. – *Global Ecol. Biogeogr. Lett.* 7: 157–166.
- 50 Lienert, J. 2004. Habitat fragmentation effects on fitness of plant populations—a review. – *J. Nat. Conserv.* 12: 53–72.
- Littell, R. C. et al. 1996. SAS system for mixed models.–SAS Inst.
- Liu, F. L. et al. 2005. ABA regulated stomatal control and photosynthetic water use efficiency of potato (*Solanum tuberosum* L.) during progressive soil drying. – *Plant Sci.* 168: 831–836.
- 55 Llorens, L. et al. 2003. Diurnal and seasonal variations in photosynthetic performance and water relations of two-occurring Mediterranean shrubs, *Erica multiflora* and *Globularia alpinum*. – *Physiol. Plant* 118: 84–95.
- Long, S. P. et al. 1994. Photoinhibition of photosynthesis in nature. – *Annu. Rev. Plant Mol. Biol.* 45: 633–662.
- 60 Lopes, L. E. and Buzato, S. 2007. Variation in pollinator assemblages in a fragmented landscape and its effects on reproductive stages of a self-incompatible treelet, *Psychotria suterella* (Rubiaceae). – *Oecologia* 154: 305–314.
- Luzuriaga, A. L. et al. 2006. Environmental maternal effects on seed morphology and germination in *Sinapis arvensis* (Cruciferae). – *Weed Res.* 46: 163–174.
- 65 Marshall, D. L. and Ellstrand, N. C. 1988. Effective mate choice in wild radish: evidence for selective seed abortion and its mechanism. – *Am. Nat.* 131: 739–756.
- Matesanz, S. et al. 2009. Impact of three global change drivers on a Mediterranean shrub. – *Ecology* 90: 2609–2621.
- 70 Maxwell, K. and Johnson, G. N. 2000. Chlorophyll fluorescence: a practical guide. – *J. Exp. Bot.* 51: 659–668.
- Menges, E. S. 1991. Seed germination percentage increases with population size in fragmented prairie species. – *Conserv. Biol.* 5: 158–164.
- 75 Molinier, J. et al. 2006. Transgeneration memory of stress in plants. – *Nature* 442: 1046–1048.
- Mooney, H. A. et al. 2001. Mediterranean-climate ecosystems.–In: Chapin III, F. S. et al. (eds), *Global biodiversity in a changing environment: scenarios for the 21st century.*, pp. 157–195. Springer.
- 80 [AQ5] Mosseau, T. A. and Fox, C. W. 1998. *Maternal effects as adaptations*.–Oxford Univ. Press.
- Nielsen, D. C. and Nelson, N. O. 1998. Black bean sensitivity to water stress at various growth stages. – *Crop Sci.* 38: 422–427.
- Parmesan, C. and Yohe, G. 2003. A globally coherent fingerprint of climate change impacts across natural systems. – *Nature* 421: 37–42.
- 85 Peñuelas, J. and Filella, I. 2001. Phenology: responses to a warming world. – *Science* 294: 793–795.
- Pyke, D. and Thompson, J. 1986. Statistical analysis of survival and removal rate experiments. – *Ecology* 67: 240–245.
- 90 Ramsey, M. and Vaughton, G. 2000. Pollen quality limits seed set in *Buchardia umbellata* (Colchicaceae). – *Am. J. Bot.* 87: 845–852.
- Roach, D. A. and Wulff, R. D. 1987. Maternal effects in plants. – *Annu. Rev. Ecol. Syst.* 18: 209–235.
- Sala, O. E. et al. 2000. Global biodiversity scenarios for the year 2100. – *Science* 287: 1770–1774.
- 95 Shaver, G. S. et al. 2000. Global warming and terrestrial ecosystems: a conceptual framework for analysis. – *Bioscience* 50: 871–882.
- Sultan, S. E. et al. 2009. Contrasting patterns of transgenerational plasticity in ecologically distinct congeners. – *Ecology* 90: 1831–1839.
- 100 Topp, G. C. and Davis, J. L. 1985. Measurement of soil water content using time domain reflectometry (TDR): a field evaluation. – *Soil Sci. Soc. Am. J.* 49: 19–24.
- Valladares, F. and Sánchez-Gómez, D. 2006. Ecophysiological traits associated with drought in Mediterranean tree seedlings: individual responses versus interspecific trends in eleven species. – *Plant Biol.* 8: 688–697.
- 105 Valladares, F. et al. 2005. Photoinhibition and drought in Mediterranean woody saplings: scaling effects and interactions in sun and shade phenotypes. – *J. Exp. Bot.* 56: 483–494.
- 110 Van Zandt, P. A. and Mopper, S. 2004. The effects of maternal salinity and seed environment on germination and growth in *Iris hexagona*. – *Evol. Ecol. Res.* 6: 813–832.
- Weiner, J. et al. 1997. How important are environmental maternal effects in plants? A study with *Centaurea maculosa*. – *J. Ecol.* 85: 133–142.
- 115 Wulff, R. et al. 1994. Seed and seedling responses to maternal and offspring environments in *Plantago lanceolata*. – *Funct. Ecol.* 8: 763–769.
- Yates, C. J. et al. 2007. Seed production, germinability and seedling growth for a bird-pollinated shrub in fragments of kwongan in south-west Australia. – *Biol. Conserv.* 136: 306–314.
- 121

0
5
10
15
20
25
30
35
40
45
50
55
60

Appendix 1. Mean values \pm SE of the study variables in the different maternal environments.

	Large fragments						Small fragments					
	High habitat quality			Poor habitat quality			High habitat quality			Poor habitat quality		
	Mesic	Dry		Mesic	Dry		Mesic	Dry		Mesic	Dry	
Morphological traits												
Germination (%)	20.39 \pm 2.81	17.37 \pm 1.40		20.97 \pm 2.75	15.94 \pm 1.33		17.45 \pm 2.29	17.13 \pm 2.21		20.10 \pm 2.90	12.87 \pm 12.87	
T ₅₀ (days)	9.50 \pm 1.43	9.22 \pm 1.19		8.25 \pm 1.08	8.15 \pm 1.34		10.01 \pm 1.19	13.65 \pm 2.32		10.90 \pm 2.19	11.75 \pm 1.19	
Survival (%)	59.93 \pm 8.10	51.47 \pm 3.6		52.49 \pm 5.6	60.12 \pm 6.56		32.37 \pm 7.50	52.99 \pm 6.14		45.47 \pm 6.44	45.94 \pm 5.18	
No. leaves	16.96 \pm 0.39	15.11 \pm 0.49		16.17 \pm 0.47	16.33 \pm 0.42		16.31 \pm 0.58	16.14 \pm 0.43		15.32 \pm 0.44	16.68 \pm 0.51	
Size March (cm ²)	24.46 \pm 1.09	23.91 \pm 1.56		25.61 \pm 1.14	21.24 \pm 1.10		21.83 \pm 1.52	22.64 \pm 1.40		24.11 \pm 1.33	23.06 \pm 1.96	
Size May (cm ²)	42.90 \pm 0.09	42.23 \pm 1.66		40.52 \pm 0.80	45.48 \pm 1.10		41.03 \pm 0.70	43.20 \pm 1.20		42.15 \pm 1.07	42.02 \pm 1.06	
Physiological traits												
Well-watered												
F _v /F _m	0.84 \pm 0.003	0.82 \pm 0.003		0.83 \pm 0.008	0.82 \pm 0.004		0.81 \pm 0.004	0.79 \pm 0.005		0.80 \pm 0.007	0.78 \pm 0.010	
A _{max} (μmol m ⁻² s ⁻¹)	9.32 \pm 0.21	12.67 \pm 0.31		10.09 \pm 0.23	8.36 \pm 0.21		8.69 \pm 0.12	8.01 \pm 0.16		8.48 \pm 0.20	8.23 \pm 0.17	
iWUE (mmol CO ₂ mol ⁻¹ H ₂ O)	20.14 \pm 1.46	23.23 \pm 1.09		15.46 \pm 0.98	20.77 \pm 1.01		11.58 \pm 0.72	17.10 \pm 1.49		23.19 \pm 1.31	17.78 \pm 0.47	
Low-watered												
F _v /F _m	0.67 \pm 0.032	0.69 \pm 0.042		0.68 \pm 0.031	0.67 \pm 0.032		0.71 \pm 0.036	0.65 \pm 0.037		0.68 \pm 0.032	0.77 \pm 0.034	
A _{max} (μmol m ⁻² s ⁻¹)	2.13 \pm 0.15	2.59 \pm 1.68		1.68 \pm 0.08	2.60 \pm 0.17		2.08 \pm 0.11	2.35 \pm 1.05		4.43 \pm 2.23	2.88 \pm 0.18	
iWUE (mmol CO ₂ mol ⁻¹ H ₂ O)	44.74 \pm 4.16	29.94 \pm 1.51		26.91 \pm 1.55	27.51 \pm 1.54		27.01 \pm 1.18	25.33 \pm 1.54		30.47 \pm 1.79	30.13 \pm 1.64	

61
65
70
75
80
85
90
95
100
105
110
115
121